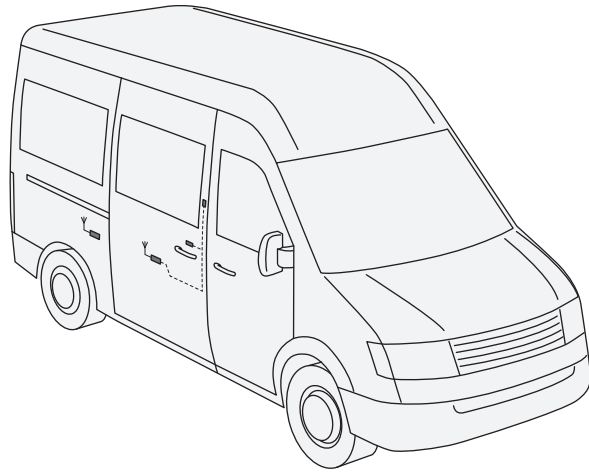




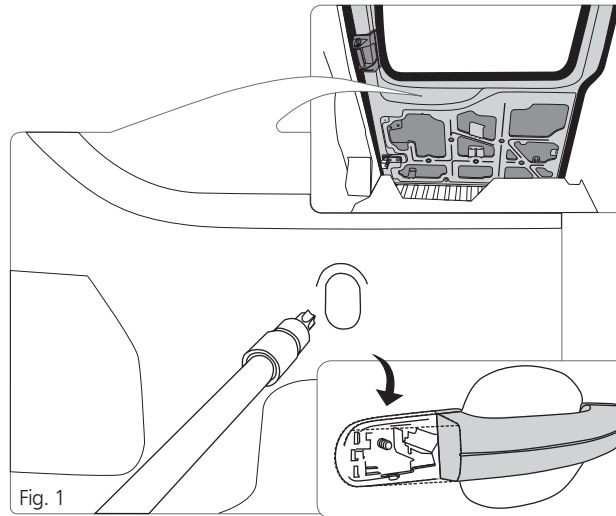
MANUAL

DRIVE CONTROL MODULE OF FORD 2 DOOR HANDLES

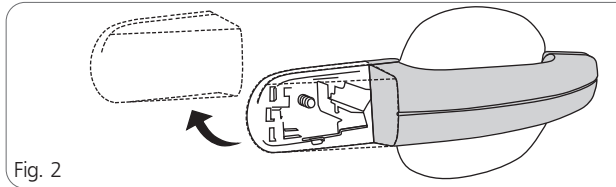


FORD TRANSIT since 2014

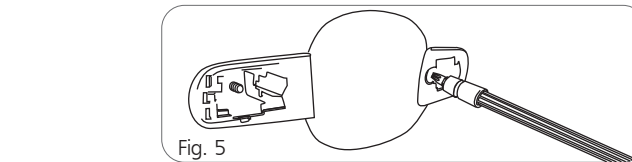
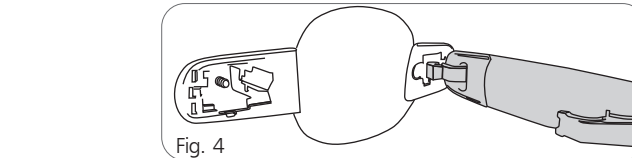
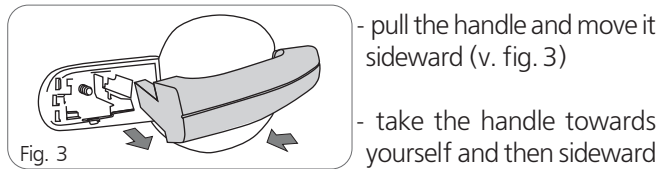
Detach outside sliding door handle (fig. 1 - 5).



Undo the bolt through the hole on the door inside (v. fig. 1)



Detach the protection plate (v. fig. 2)



- undo the takedown screw of outside handle inner part (fig. 5).

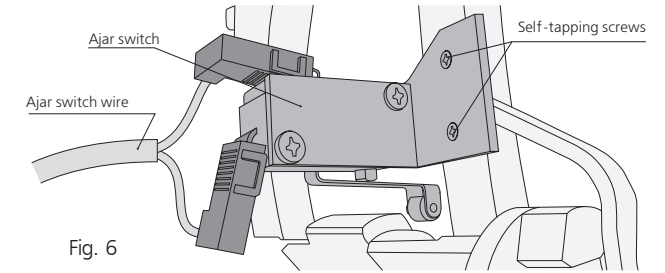


Fig. 6

Screw up the ajar switch bracket with self-tapping screws 2,5x8 on the outside handle. Connect two wires with ajar switch contacts (fig. 6). Place the handle back.

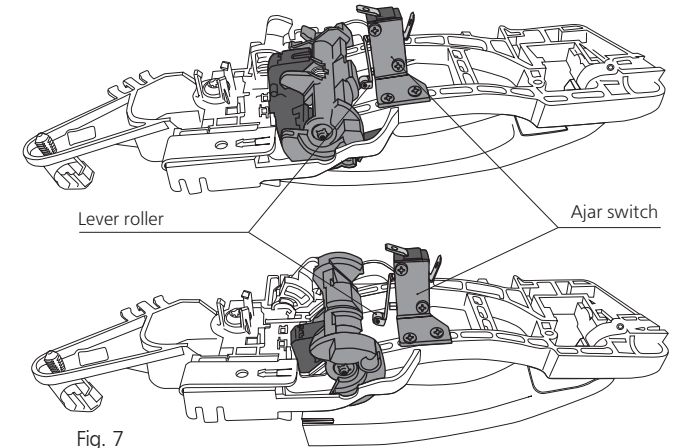


Fig. 7

Check the ajar switch for correct operation. Contacts must be closed when actuator presses the lever roller of the ajar switch (fig. 7)

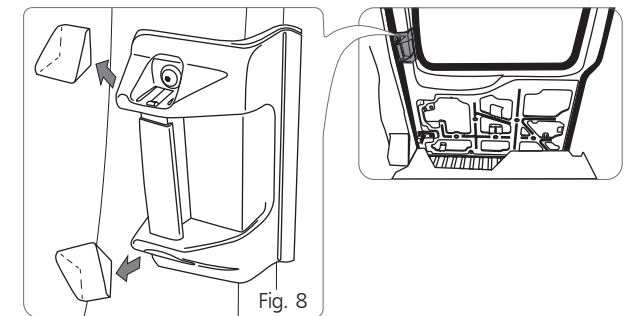
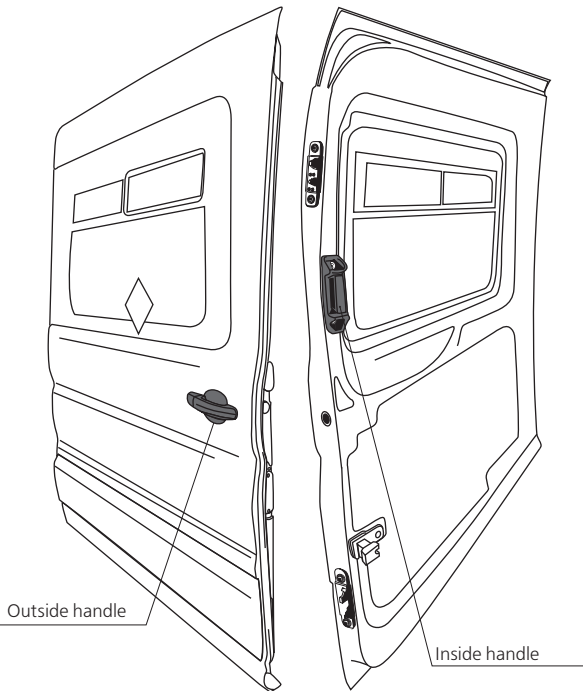


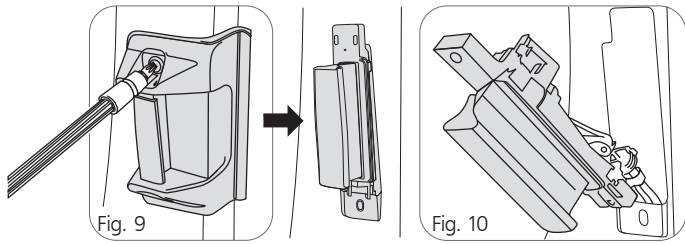
Fig. 8

Remove plugs and undo two screws from the inside handle holder, one on the top, the other on the bottom (fig. 8, 9).



Outside handle

Inside handle



Detach two wire ropes from the inside handle (fig. 10)

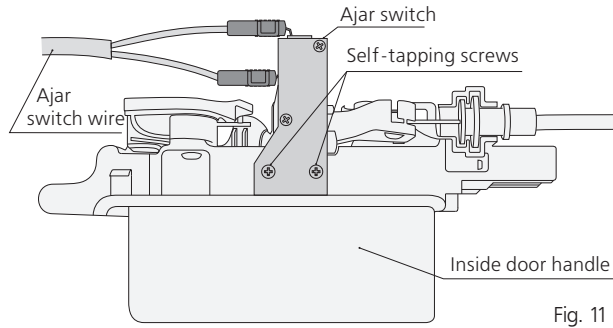


Fig. 11

Detach inside sliding door handle (fig. 8, 9, 10). Screw up the ajar switch bracket with self-tapping screws 2,5x8 on the inside handle. Connect two wires with ajar switch contacts (fig. 11). Place the handle back.

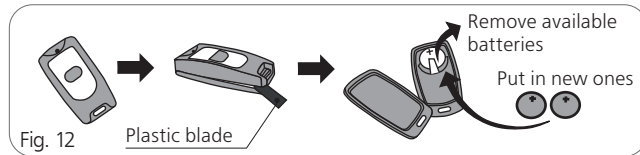


Fig. 12

Before operation start change batteries. For transmitter two batteries CR2016 3V are needed. Change the batteries according to fig. 12.

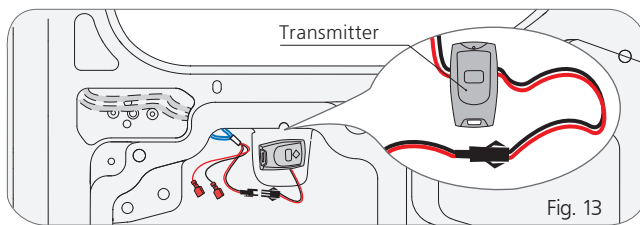
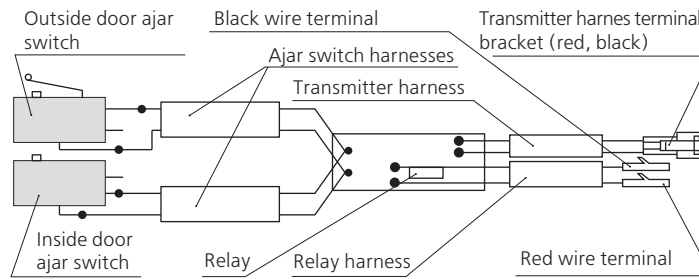
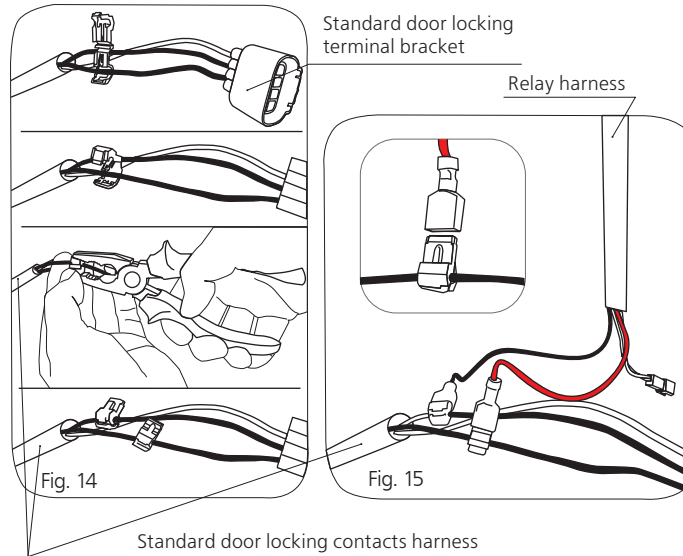


Fig. 13

In the indicated place fig. 13 fix the transmitter of the control module with bi-adhesive 3M. Pull the ajar switch wires towards it.



Connect the transmitter harness with the transmitter as shown in fig. 13, whereas relay harness with the standard door locking contacts harness as in fig. 15. Connect cut-in contacts with two black wires of the standard door locking terminal bracket as in fig. 14. Connect two terminals of red and black wires of the relay harness with the cut-in contacts as in fig. 15.



NOTE



If the wires are connected correctly, the LED in transmitter must switch on and off. To do this pull any handle. When standard door locking is switched on (the sliding door must be closed), the LED mustn't switch on, in case of pulling an outside handle.

Connect receiver with controller in accordance with the drive in use: for Tros drive (fig. 16), for Kroko drive with controllers 101, 102 (fig. 17), 107 (fig. 18), for Cayman drive (fig. 19).

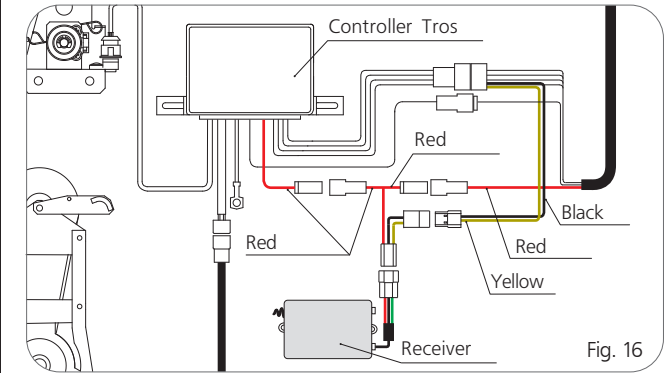


Fig. 16

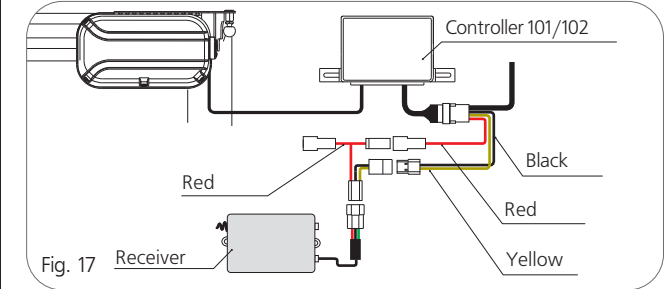


Fig. 17

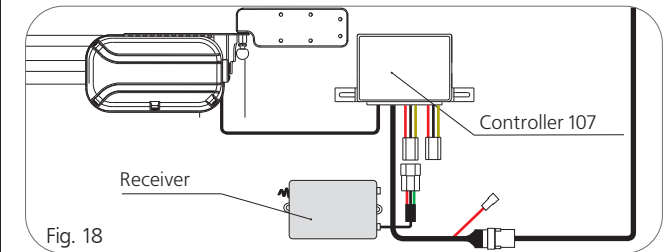


Fig. 18

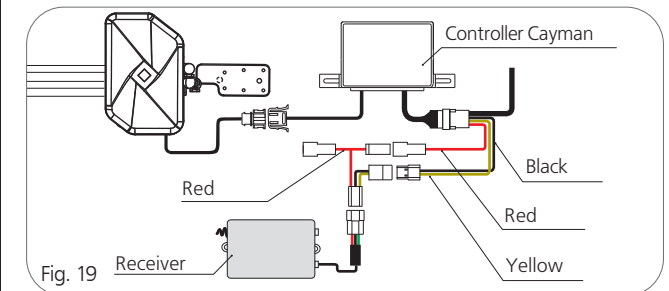


Fig. 19